

State of Wyoming Corner Record

(In compliance with the *CORNER PERPETUATION AND FILING ACT*, Wyoming Statutes, 1997, Section 33-29-140, et seq., and the Rules and Regulations of the Board of Registration for Professional Engineers and Professional Land Surveyors)

Reverse side of this form may be used if more space is needed.

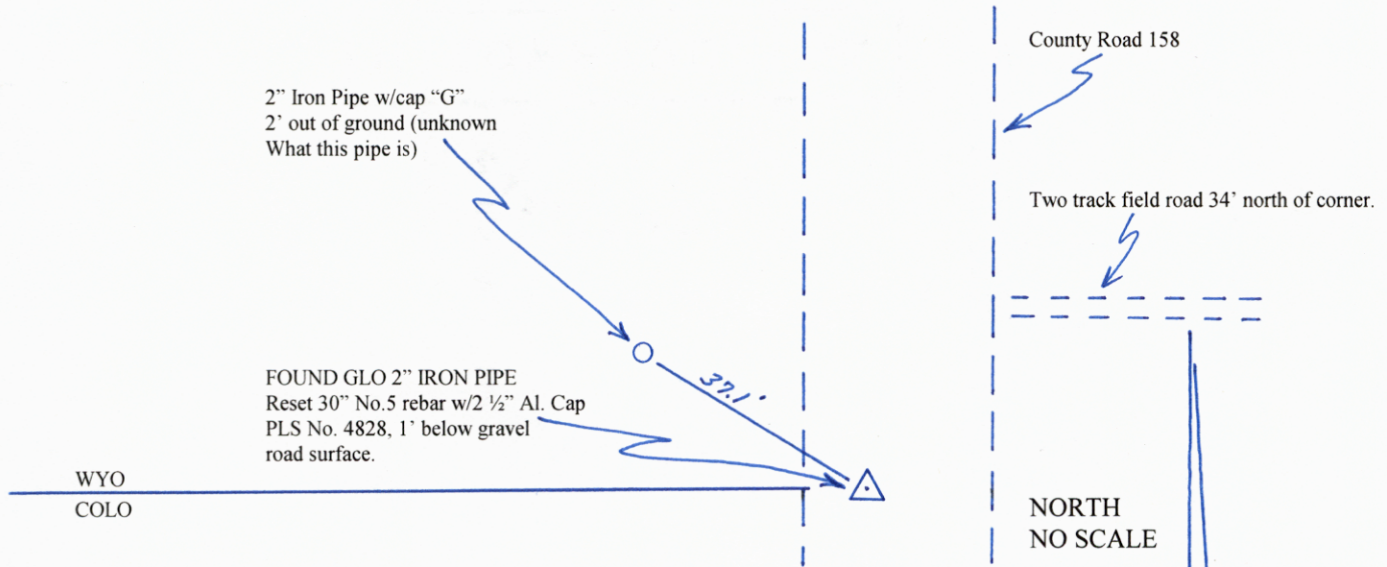
Record of original survey and citation of source of historical information (if corner is lost or obliterated). Description of corner monumentation evidence found and/or monument and accessories established to perpetuate the location of this corner. Sketch of relative location of monument, accessories, and reference points with course and distance to adjacent corner(s) (if determined in this survey). Method and rationale for reestablishment of lost or obliterated corner.

Closing Corner: Sections 22 & 23 on the WYO/COLO State Line, T12N, R61W, 6th PM, Laramie County, Wyoming.

GLO record: "...iron post, 3' long, 2 ins.diam., 2 1/2 ft. in ground...and mark on the brass cap on the post."

Found: 1911 GLO - 2" diam. Iron pipe (disturbed) with no brass cap, in Laramie County Road 158, 3" below the surface. Had obviously been hit by road graders over the years, but was retrievable by excavation of the pipe below the bend, and then removed.

Set: 30" No.5 rebar w/2 1/2" dia. Aluminum Survey Cap, stamped PLS 4828 and proper identification, 1' below gravel road surface in the retrieved vertical shaft of excavated pipe. Bent pipe was left along the west roadside as evidence.



Position of pipe established by excavation.



Position in County Road 158, looking north, 4' west of Centerline.

SEE MAP ON BACK OF THIS PAGE FOR TIES TO SURROUNDING CORNERS.

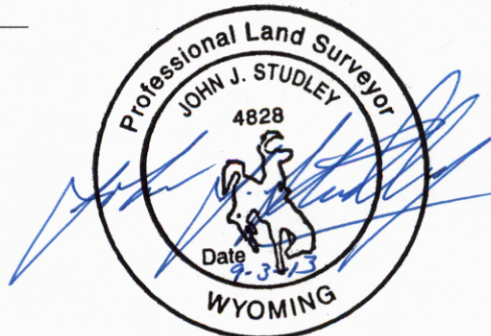
Date of Field Work: JULY 2013 Office Reference: _____

CROSS INDEX DIAGRAM

	1	2	3	4	5	6	7	8	9	10	11	12	13	14	15	16	17	18	19	20	21	22	23	24	25
A																									
B																									
C		6		5			4				3					2						1			
D																									
E																									
F																									
G			7		8		9				10					11						12			
H																									
J																									
K																									
L			18		17		16				15					14						13			
M																									
N																									
O																									
P			19		20		21				22					23						24			
Q																									
R																									
S																									
T			30		29		28				27					26						25			
U																									
V																									
W																									
X			31		32		33				34					35						36			
Y																									
Z																									

Land Surveyor / Firm / Address
Studley Land Surveying, PC
John J. Studley, PLS No. 4828
615 West Dale Blvd.
Cheyenne, WY 82009
Telephone: 307-287-4755

This corner record was prepared by me or under my direction and supervision.
 SEAL & SIGNATURE



Corner Name: Closing Corner common to Sections: 22 & 23 on the WYO/COLO State Line, T 12 N, R 61 W, 6th P.M. Cross-Index No.: south of N-17, SBRPEPLS/PLSW: March 1994; PLSW January 1998

